

EDITION

Lifestyle Collection.

SPRING & SUMMER 2024



Tenson®

EST. 1951



Lifestyle Men.

Lifestyle Collection.
Rain Men Collection.

4-69

Lifestyle Women.

Lifestyle Collection.
Rain Women Collection.

70-127

Technologies.

128-129

Lifestyle Men SS24.



NEW! PADDED RAIN! POWERED WITH MPC!

Tenson Transition Collection.

This collection spells stylish comfortable protection from the elements - everyday urban lifestyle pieces that seamlessly transition you from winter to spring and summer to autumn without buying a whole new wardrobe. All rain garments in this collection feature Tenson's proprietary MPC technology.

Tenson Transition Coat.

DESIGNED FOR:

Late Spring / Early Summer
Late Summer / Early Autumn

BREATHABILITY

At high-intensity activity.



WATERPROOF

Withstands heavy rain.



WINDPROOF

Withstands storms.



INSULATION

Withstands low temperatures.



DURABILITY

Normal- to high-wear resistance.



FEATURES

- 2-way main zipper construction
- Adjustable cuffs
- Adjustable fixed hood vertical and horizontal
- High collar
- Inner pocket with zip
- Taped seams
- Two front pockets with zippers
- Water-repellent zippers



RIPSTOP

- ◇ MPC Lightweight
- ◇ WP 5 000 MP 5 000
- ◇ PFC-free water-repellent finish

SHELL FABRIC

- ◇ 100% Recycle Polyamide

LINING

- ◇ 100% Recycle Polyamide

FILLING

- ◇ 80 gr AirPush™ Recycle Polyester insulation

FIT

- ◇ Regular

SIZES

- ◇ S-XXXL

ART.NO.

- ◇ 5018012

EURO: 220,00



912 LIGHT GREY



964 DARK BLUE



999 BLACK

NEW! PADDED RAIN! POWERED WITH MPC!

Tenson Transition Collection.

This collection spells stylish comfortable protection from the elements - everyday urban lifestyle pieces that seamlessly transition you from winter to spring and summer to autumn without buying a whole new wardrobe. All rain garments in this collection feature Tenson's proprietary MPC technology.

Tenson Transition Jacket.

DESIGNED FOR:

Late Spring / Early Summer
Late Summer / Early Autumn

BREATHABILITY

At high-intensity activity.



WATERPROOF

Withstands heavy rain.



WINDPROOF

Withstands storms.



INSULATION

Withstands low temperatures.



DURABILITY

Normal- to high-wear resistance.



FEATURES

- Adjustable cuffs
- Adjustable hem
- Adjustable hood vertical and horizontal
- Detachable hood
- High collar
- Innerpocket with zip
- Taped seams
- Two front pockets with zippers
- Water repellent zippers



RIPSTOP

- ◇ MPC Lightweight
- ◇ WP 5 000 MP 5 000
- ◇ PFC-free water-repellent finish

SHELL FABRIC

- ◇ 100% Recycle Polyamide

LINING

- ◇ 100% Recycle Polyamide

FILLING

- ◇ 80 gr AirPush™ Recycle Polyester insulation

FIT

- ◇ Regular

SIZES

- ◇ S-XXXL

ART.NO.

- ◇ 5018014

EURO: 200,00



912 LIGHT GREY



964 DARK BLUE



663 GREY GREEN



999 BLACK

NEW! PADDED RAIN! POWERED WITH MPC!

Tenson Transition Collection.

This collection spells stylish comfortable protection from the elements - everyday urban lifestyle pieces that seamlessly transition you from winter to spring and summer to autumn without buying a whole new wardrobe. All rain garments in this collection feature Tenson's proprietary MPC technology.

Tenson Transition Vest.

DESIGNED FOR:

Late Spring / Early Summer
Late Summer / Early Autumn

BREATHABILITY

At high-intensity activity.



WATERPROOF

Withstands heavy rain.



WINDPROOF

Withstands storms.



INSULATION

Withstands low temperatures.



DURABILITY

Normal- to high-wear resistance.



FEATURES

- Adjustable hem
- High collar
- Hood folded inside collar
- Innerpocket with zip
- Taped seams
- Two front pockets with zippers
- Water repellent zippers



RIPSTOP

- ◇ MPC Lightweight
- ◇ WP 5 000 MP 5 000
- ◇ PFC-free water-repellent finish

SHELL FABRIC

- ◇ 100% Recycle Polyamide

LINING

- ◇ 100% Recycle Polyamide

FILLING

- ◇ 80 gr AirPush™ Recycle Polyester insulation

FIT

- ◇ Regular

SIZES

- ◇ S-XXL

ART.NO.

- ◇ 5018016

EURO: 150,00



964 DARK BLUE

999 BLACK

A man with curly hair, wearing a long brown trench coat over a light-colored shirt and trousers, leans against a textured grey wall. He is looking down with his hands clasped. In the foreground, the back and side profile of a woman wearing a light blue and white jacket and a dark cap are visible, slightly out of focus. The scene is lit with soft, natural light, creating a moody atmosphere.

Introducing Tenson Trench Nouveau...

...powered with MPC Extreme™



POWERED WITH MPC EXTREME.

Trench Noveau.

Premiere for a contemporary take on the classic trench coat, Tenson's Trench Noveau mixes a modern simplistic design combined with a classic silhouette and wind- and waterproof characteristics.

The khaki trench is a timeless piece loved by men & women of all ages, the contemporary Noveau version mixes classic cuts with the charm of a trench's wider lapel, storm flap and pockets, half belted cuff with buttons etc.

Being such a functional design the trench coat has not witnessed any major changes over the past century, the time has come to change that and offer a new take.

DESIGNED FOR:

Urban every day lifestyle / Outdoor

BREATHABILITY

At high-intensity activity.



WATERPROOF

Withstands storms.



WINDPROOF

Withstands storms.



DURABILITY

Normal- to high-wear resistance.



FEATURES

- Two front pockets
- Ventilation under yoke at back
- Belt in waist
- Slit at sides
- 2 way zip
- Detachable hood
- Adjustable hood vertical
- Adjustable cuffs
- Inner pocket with zip
- Water repellent zipper
- Taped seams



FABRIC

- ◇ MPC Extreme Shell
- ◇ 3 layer stretch
- ◇ WP 10 000 mm
- ◇ MP 10 000 gr/m2/24h
- ◇ PFC free waterrepellent finish
- ◇ 100% Recycle Polyester

FIT

- ◇ Relaxed

SIZES

- ◇ S-XXL

ART.NO.

- ◇ 5017831

EURO: 350,00



556 BLUE

827 BRASS KHAKI

999 BLACK

Lifestyle / Men

POWERED WITH MPC EXTREME™

Dew Point Shell Parka.

This stylish and comfortable parka protects you from the elements - an everyday urban lifestyle piece that helps you seamlessly transition from winter to spring and summer to autumn without buying a whole new wardrobe. Our Dew Point Parka features Tenson's proprietary MPC technology.

DESIGNED FOR:

Late Spring / Early Summer
Late Summer / Early Autumn

BREATHABILITY

At high-intensity activity.



WATERPROOF

Withstands heavy rain.



WINDPROOF

Withstands storms.



DURABILITY

Normal- to high-wear resistance.



FEATURES

- 2 way zip
- Adjustable cuffs
- Fixed hood inside collar
- Fleece inside neck at back
- High collar
- Innerpocket with zip
- Taped seams
- Two front pockets with zippers
- Water repellent zippers
- Ventilation under yoke at back

SHELL FABRIC

- ◇ MPC Extreme™
2.5L Stretch
- ◇ WP 10 000 MP 10 000
- ◇ PFC-free
water-repellent finish
- ◇ 50% Recycle Polyester
50% Polyester

FIT

- ◇ Regular

SIZES

- ◇ S-XXL

ART.NO.

- ◇ 5017908

EURO: 230,00



663 GREY GREEN



728 SAND



964 DARK BLUE



999 BLACK

A man with curly brown hair and a light beard is standing in a narrow, stone-walled street. He is wearing a white, high-tech outdoor jacket with dark brown accents and a black turtleneck underneath. He has a dark backpack strap over his right shoulder and is holding a professional camera with a large lens in his right hand. The background shows traditional stone buildings and a street lamp, suggesting a European town setting. The lighting is soft and natural, highlighting the texture of the jacket and the stone walls.

Tenson Dew Point. Powered with MPC Extreme™

POWERED WITH MPC EXTREME™

Dew Point Shell Jacket.

The Dew Point Shell jacket is a waterproof jacket that has great breathability and ventilation. With the 10K waterproof rating you can be out for several hours in the rain and its sealed seams and water resistant zips will ensure you stay dry. The hood can be adjusted to customise the fit.

The jacket has adjustable cuffs that can be tightened in extreme weather. The jacket is also stretchy and has articulated sleeves to provide optimal movement without the sleeves riding up at full stretch. A comfortable, practical and stylish jacket that's bound to become a favourite.

DESIGNED FOR:

Urban Everyday Lifestyle / Outdoor

BREATHABILITY

At high-intensity activity.



WATERPROOF

Withstands heavy rain.



INSULATION

Withstands cold and minus degrees



WINDPROOF

Withstands storms.



DURABILITY

Normal- to high-wear resistance.



FEATURES

- 2 way zip
- Adjustable cuffs
- Adjustable hem
- Fixed hood
- Fleece inside neck at back
- High collar
- Innerpocket with zip
- Taped seams
- Two front pockets with zippers
- Water repellent zippers
- Ventilation under yoke at back

SHELL FABRIC

- ◇ MPC Extreme™
2.5L Stretch
- ◇ WP 10 000 MP 10 000
- ◇ PFC-free
water-repellent finish
- ◇ 50% Recycle Polyester
50% Polyester

FIT

- ◇ Regular

SIZES

- ◇ S-XXL

ART.NO.

- ◇ 5017634

EURO: 220,00



913 LIGHT GREY

999 BLACK

590 DARK NAVY

663 GREY GREEN

POWERED WITH MPC (WP 5.000MM).

Stewart Jacket.

The Stewart Jacket is a bomber jacket with a collar that's both wind and water repellent. It's made of a mix of 45% cotton and 55% polyamide with a 5K waterproof rating. The inner is made of mesh which provides good ventilation and it also has sealed seams. This is an update of a regular bomber jacket as it works just as well in town as it does when you're out in nature.

This sturdy bomber jacket with its high collar will protect you from the elements. Like a traditional bomber jacket, it has ribbing at the waist and at the cuffs to create the same stylish look. The jacket has two zipped front pockets where you can store your important items.

DESIGNED FOR:

Urban Everyday Lifestyle.

BREATHABILITY

At high-intensity activity.



WINDPROOF

Withstands storms.



WATERPROOF

Withstands rain.



DURABILITY

Normal- to high-wear resistance.



FEATURES

- Fleece inside collar
- Innerpocket
- Mesh lining
- Rib at hem and cuffs
- Taped seams
- Two front pockets with zippers
- Water repellent zippers

SHELL FABRIC

- ◇ MPC
- ◇ WP 5 000 mm
- ◇ MP 5 000 g/m2/24h
- ◇ PFC-free water-repellent finish

COMPOSITION

- ◇ 45% Cotton
- ◇ 55% Polyamide

LINING

- ◇ 100% Polyester

FIT

- ◇ Regular

SIZES

- ◇ S-XXXL

ART.NO.

- ◇ 5017904

EURO: 180,00



933 LIGHT GREY



680 OLIVE



590 DARK NAVY



999 BLACK

POWERED WITH MPC (WP 5.000MM).

Copeland Jacket.

The Copeland Jacket is a stylish rain jacket that can be worn around town and for outdoor activities. It's made of 70% polyester and 30% recycled polyester with taped seams and a 10K waterproof rating. The hood can be adjusted vertically and horizontally and is easy to remove when it's not needed.

Even the sleeves and waist can be adjusted to achieve a perfect fit. To ensure maximum freedom of movement, the arms are articulated so they don't ride up at full stretch. The Stewart rain jacket has an inner pocket and two zipped front pockets. Connor is a stylish rain jacket that will become a staple in your wardrobe – wear it when cycling to work or walking the dog as well out in the woods with your friends.

DESIGNED FOR:

Urban Everyday Lifestyle / Outdoor

BREATHABILITY

At high-intensity activity.



WATERPROOF

Withstands heavy rain.



WINDPROOF

Withstands storms.



DURABILITY

Normal- to high-wear resistance.



FEATURES

- Adjustable cuffs
- Adjustable hem
- Adjustable hood vertical and horizontal
- Articulated sleeves
- Detachable hood
- E-dye Polyester lining
- Inner pocket with zip
- One chest pocket with zipper
- Taped seams
- Two front pockets with zippers

SHELL FABRIC

- ◇ MPC Extreme
- ◇ WP 10 000 mm
- ◇ MP 10 000 g/m²/24 h
- ◇ PFC- free water-repellent finish

LINING

- ◇ 100% Polyester eDye

FIT

- ◇ Regular

SIZES

- ◇ S-XXXL

ART.NO.

- ◇ 5017905

EURO: 190,00



728 SAND



590 DARK NAVY



999 BLACK

A TIMELESS STYLE POWERED WITH MPC EXTREME™

Biscaya Evo Rain Jacket.

Our classic 4-way stretch rain jacket featuring Tenson's proprietary MPC Extreme™. A waterproof and windproof jacket with great breathability to keep you comfortable on your adventure. Biscaya EVO is an essential jacket for any outdoor enthusiast or urban explorer.

This lightweight rain jacket is packed with technical features like adjustable cuffs, adjustable and detachable hood, taped seams, and an inner pocket to keep your valuables safe while out exploring.

DESIGNED FOR:

Urban every day lifestyle / Outdoor

BREATHABILITY

At high-intensity activity.



WATERPROOF

Withstands heavy rain.



WINDPROOF

Withstands storms.



DURABILITY

Normal- to high-wear resistance.



FEATURES

- Adjustable cuffs
- Adjustable hem
- Adjustable hood vertical and horizontal
- Articulated sleeves
- Detachable hood
- Innerpocket
- Taped seams
- Two zippered front pockets
- Ventilation

SHELL FABRIC

- ◇ MPC Extreme™
4-way stretch
WP 15 000
MP 10 000
- ◇ PFC-free
water-repellent finish
- ◇ 100% Lightweight
Polyester

FIT

- ◇ Regular

SIZES

- ◇ S-XXXL

ART.NO.

- ◇ 5017969

EURO: 160,00



590 DARK NAVY



999 BLACK NOOS

Lifestyle / Men

A man with dark, wavy hair and a light beard is wearing a beige, multi-pocketed anorak jacket. He is standing in front of a classical building with large stone columns. The lighting is warm, suggesting late afternoon or early morning. The text "Mountain Anorak 55. Reconnecting with our history." is overlaid in white on the left side of the image.

Mountain Anorak 55. Reconnecting with our history.

A TRIBUTE TO THE 1955 TENSON MOUNTAIN ANORAK

Mountain Anorak 55.

In 1955 Tenson launches the Fjäll Anoraken (Mountain Anorak 7031), which soon takes part in the Norwegian expedition of 1971 to the summit of Huagoruncho, a 5,800+ meter peak in the Chilean Andes. The Tenson Fjäll Anoraken was made with a cotton poplin fabric, a durable, coated mix of cotton and polyester for wind- and water-proof properties along with very good breathability in variable conditions.

The version you will soon wear is a tribute to the Mountain Anorak of 1955. Of course, we have taken the liberty to improve the functionality and enhanced the durability of the fabric which is a comfortable cotton and polyester blend.

DESIGNED FOR:

Trekking / Hiking / Lifestyle

BREATHABILITY

At high-intensity activity.



WATERPROOF

Withstands heavy rain.



WINDPROOF

Withstands storms.



DURABILITY

Normal- to high-wear resistance.



FEATURES

- Adjustable cuffs
- Adjustable hem
- Fixed adjustable vertical and horizontal hood
- Adjustable waist
- Kangaroo pocket at front
- Two zippered front pockets
- Ventilation

FABRIC

- ◇ EkoTrek™
- 65% Recycle Polyester
- 35% Organic Cotton



FIT

- ◇ Relaxed unisex

SIZES

- ◇ XXS-XXL / Unisex

ART.NO.

- ◇ 5017688

EURO: 200,00



233 DARK ORANGE



680 OLIVE



712 SAND



590 DARK NAVY



**Mount Robson Jacket.
Reconnecting with our history.**

A TRIBUTE TO THE 1984 TENSON ICON

Mount Robson Jacket.

Tenson's Mount Robson jacket was launched in 1984 and was among other jackets tested by IFMGA Mountain Guide Guy Clarkson, a professional guide testing Tenson gear in tough everyday working conditions. The Mount Robson jacket was praised for its comfort and ease of movement. Clarkson's real-world testing was carried out on Snowpatch Spire in the Canadian Rockies. The Tenson jacket you will soon wear is an updated remake of the classic 1984 Tenson Mount Robson Jacket - enjoy!

DESIGNED FOR:

Trekking / Hiking / Lifestyle

BREATHABILITY

At high-intensity activity.



WATERPROOF

Withstands heavy rain.



WINDPROOF

Withstands storms.



DURABILITY

Normal- to high-wear resistance.



FEATURES

- Adjustable cuffs
- CarbonZERO certified product
- Detachable hood inside collar
- Inner pocket with velcro
- Inner pocket with zip
- One chest pocket with zipper
- Two chest pockets
- Two way hand pockets at front

Guy Clarkson, mountain guide and explorer, seen here in the original Mount Robson Jacket while carrying out testing at Snowpatch Spire peak Canadian Rockies.



FABRIC

- ◇ EkoTrek™
- 65% Recycle Polyester
- 35% Organic Cotton



FIT

- ◇ Regular

SIZES

- ◇ S-XXL

ART.NO.

- ◇ 5017511

EURO: 220,00



680 OLIVE



712 SAND



999 BLACK

POWERED WITH RDS CERTIFIED DOWN.

TXlite™ ShiBui Down Jacket.

A lightweight and packable RDS down (90/10 down/feather 650 fill power) jacket that is wind and water repellent make sit great for any outdoor activity all year around. The Shibui down jacket can be worn as an outer layer or under a shell jacket for extra warmth - it fits our popular Shibui ski shell jacket launched AW23 season like a glove! The RDS certified down is responsibly sourced down, fully traceable. Comes with a PFC free water-repellent finish.

Shibui - a Japanese word that refers to a particular aesthetic of simple, subtle, and unobtrusive beauty. It describes an object that appears to be simple overall, but includes subtle details such as textures and functionality. It reflects a balance between simplicity and complexity.

DESIGNED FOR:

Urban Everyday Life / Outdoor

BREATHABILITY

At high-intensity activity.



INSULATION

Withstands low temperatures.



WINDPROOF

Withstands storms.



DURABILITY

Normal- to high-wear resistance.



FEATURES

- Adjustable hem
- Articulated sleeves
- Elastic binding at sleeve ends
- Fill Power 650
- Fixed hood
- Folded chinguard
- Glued channels
- Insulation: Duckdown 90/10
- RDS certified down
- Two front pockets with zippers

SHELL FABRIC

- ◇ Light Weight
- ◇ PFC- Free water repellent finish
- ◇ 100% Recycle Polyamid

INSULATION

- ◇ RDS Certified Down
- ◇ 90% Down
- ◇ 10% Feather
- ◇ 650 Fill Power

FIT

- ◇ Regular

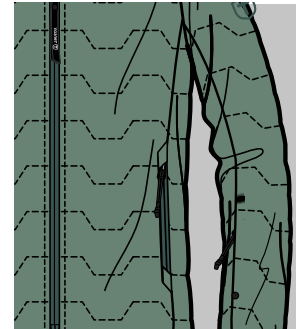
SIZES

- ◇ S-XXL

ART.NO.

- ◇ 5017961

EURO: 180,00



648 GREY GREEN



964 DARK BLUE



999 BLACK

100% RECYCLED POLYESTER.

Yoke Half Zip.

Our Yoke Half Zip is a warm, cosy and stylish fleece. Fleece is a variant of 100% polyester which is very warm and currently on trend. It can be worn both as a jacket and as an insulating midlayer on colder days. Its raised collar provides good insulation at the neck.

DESIGNED FOR:

Urban every day lifestyle / Outdoor

BREATHABILITY

At high-intensity activity.



DURABILITY

Normal- to high-wear resistance.



FEATURES

- Elastic at wrist
- Elastic hem
- Half zip at neck opening
- One chest pocket with zipper
- Two front pockets with zippers

FABRIC

- ◇ Pile
- ◇ 100% Recycled Polyester

FIT

- ◇ Relaxed

SIZES

- ◇ S-XXL

ART.NO.

- ◇ 5017646

EURO: 80,00



711 SAND



964 DARK BLUE



999 BLACK

SUPER COSY & WARM

Yoke Full Zip.

Our Yoke Full Zip is a warm, cosy and stylish fleece. Fleece is a variant of 100% polyester which is very warm and currently on trend. It can be worn both as a jacket and as an insulating midlayer on colder days. Its raised collar provides good insulation at the neck.

DESIGNED FOR:

Urban every day lifestyle / Outdoor

BREATHABILITY

At high-intensity activity.



DURABILITY

Normal- to high-wear resistance.



FEATURES

- Elastic at wrist
- Elastic hem
- One chest pocket with zipper
- Two front pockets with zippers

FABRIC

- ◇ Pile
- ◇ 100% Recycled Polyester

FIT

- ◇ Relaxed

SIZES

- ◇ S-XXL

ART.NO.

- ◇ 5017896

EURO: 90,00



711



964 DARK NAVY



999 BLACK

A TENSON CLASSIC!

Miracle Fleece.

Miracle Fleece is a thick fleece sweater that is perfect as an isolating mid-layer or for wearing on a cool autumn day. Fleece has become a very popular material as it is lightweight, flexible, and gives clothing a classic look. Miracle Fleece is a warm fleece, with elastic cuffs and hem for extra isolation.

It has a soft collar, full-length zip and two pockets with zips that are perfect for warming your hands or storing your things. You will easily find a favourite among the variety of colours and with a discreet logo, the Miracle Fleece jumper won't stand out more than necessary.

DESIGNED FOR:

Urban every day lifestyle / Outdoor

BREATHABILITY

At high-intensity activity.



WINDPROOF

Withstands storms.



DURABILITY

Normal- to high-wear resistance.



FEATURES

- Adjustable hem
- Elastic at wrist
- Two front pockets with zippers

FABRIC

- ◇ Fleece
- ◇ Antipilling
- ◇ 100% Polyester

FIT

- ◇ Regular

SIZES

- ◇ S-3XL

ART.NO.

- ◇ 5017395 - Colour 538, 733
- ◇ 5016752 NOOS - Colour 680, 980, 999, 590

EURO: 70,00



538 BLUE



733 KHAKE



680 OLIVE



980 ANTRACIT



999 BLACK



590 DARK NAVY

100% COTTON.

Essential Polo 2.0.

A classic cotton polo with an embroidered logo on left chest.
Modern cut and regular fit. Essential style and maximum comfort,
a must-have in every wardrobe.

DESIGNED FOR:

Urban every day lifestyle / Outdoor

BREATHABILITY

At high-intensity activity.



DURABILITY

Normal- to high-wear resistance.



FEATURES

- Flat knit collar
- Flat knit sleeve ends
- Slit at sides

FABRIC

- ◇ Pique knit
- ◇ 100% cotton

FIT

- ◇ Regular

SIZES

- ◇ S-3XL

ART.NO.

- ◇ 5017663

EURO: 60,00



001 WHITE



215 LIGHT ORANGE



961 GREY GREEN



648 GREY GREEN



590 DARK NAVY



999 BLACK

100% ORGANIC COTTON.

Heritage Logo Tee.

A short sleeve t-shirt in midweight pure organic cotton. Big logo patch center chest. Modern cut and regular fit. Essential style and maximum comfort, a must-have in every wardrobe.

DESIGNED FOR:

Urban every day lifestyle / Outdoor

BREATHABILITY

At high-intensity activity.



DURABILITY

Normal- to high-wear resistance.



FABRIC

- ◇ Single Jersey
- ◇ 100% Organic Cotton

FIT

- ◇ Relaxed

SIZES

- ◇ S-3XL

ART.NO.

- ◇ 5017891

EURO: 40,00



217 DARK ORANGE



990 LIGHT GREY MELANGE



964 DARK NAVY



999 BLACK

RELAXED SUMMER LOOK.

Cargo Shorts.

Classic cargo shorts in a cotton ripstop quality with a cool silhouette and a modern look.
Match them with our Tenson Heritage organic tee or one of our Polo's.



Lifestyle / Men

DESIGNED FOR:

Urban every day lifestyle / Outdoor

BREATHABILITY

At high-intensity activity.



DURABILITY

Normal- to high-wear resistance.



FEATURES

- One back pocket
- One leg pocket
- Two slanted open front pockets

FABRIC

- ◇ Ripstop
- ◇ 100% Cotton

FIT

- ◇ Regular

SIZES

- ◇ S-XXL

ART.NO.

- ◇ 5017901

EURO: 100,00



733 KHAKE



590 DARK NAVY



999 BLACK

RELAXED SUMMER LOOK.

Thad Shorts.

Classic cargo shorts with a cool silhouette and a modern look. Match them with our Tenson Heritage organic tee or one of our Polo's.

DESIGNED FOR:

Urban every day lifestyle / Outdoor

BREATHABILITY

At high-intensity activity.



DURABILITY

Normal- to high-wear resistance.



FEATURES

- Two back pockets
- Two leg pockets
- Two slanted open front pockets

FABRIC

- ◇ Quickdry
- ◇ 75% Polyamide
25% Cotton

FIT

- ◇ Relaxed

SIZES

- ◇ XS-XXXL

ART.NO.

- ◇ 5017513

EURO: 90,00



590 DARK NAVY



745 KHAKI



988 ANTRACIT



685 DARK OLIVE



Rain Men SS24.



TXlite™ Skagway Jacket.
Powered with MPC Extreme™



POWERED WITH TENSON'S MPC EXTREME™

TXlite™ Skagway Jacket.

Our TXlite™ Skagway is a stylish shell jacket made with Tenon's MPC Extreme™ material, which makes this jacket completely waterproof with exceptional breathability. It is specially developed to be very lightweight and packable for your adventurous journeys.

If blazing sun suddenly turns into windy weather you can have your TXlite™ to hand in your bag. TXlite™ Skagway also features an adjustable hood, hem and cuffs, as well as articulated arms, under-arms ventilation, taped seams and multiple zip pockets.

DESIGNED FOR:

Urban Everyday Life / Outdoor

BREATHABILITY

At high-intensity activity.



WATERPROOF

Withstands heavy rain.



WINDPROOF

Withstands storms.



DURABILITY

Normal- to high-wear resistance.



FEATURES

- Adjustable cuffs
- Adjustable hem
- Adjustable hood vertical and horizontal
- Articulated sleeves
- Fixed hood
- Folded chinguard
- Innerpocket with zip
- One sleeve pocket with zipper
- RECCO® Rescue system
- Taped seams
- Two chest pockets with zippers
- Two front pockets with zippers
- Water repellent zippers
- Ventilation under arm



SHELL FABRIC

- ◇ MPC Extreme™ Shell
- ◇ 3L Stretch
- ◇ WP 20 000 MP 20 000
- ◇ Ripstop
- ◇ PFC-free
- water-repellent finish
- ◇ 100% Polyamid

FIT

- ◇ Regular

SIZES

- ◇ S-XXXL

ART.NO.

- ◇ 5017443

EURO: 300,00



662 GREY GREEN



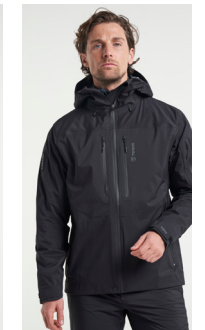
858 DARK OLIVE



562 PETROL BLUE



964 DARK BLUE



999 BLACK

POWERED WITH TENSON'S MPC EXTREME™

TXlite™ Skagway Pant.

A pair of waterproof pants for men made from Tenson's MPC Extreme™ laminate technology, with a 20.000mm waterproof rating. Perfect for active outdoor adventures where the conditions call for durable and protective clothing. In the cold, these shell trousers can be worn on top of a base layer, over another pair of trousers, or as one of many layers. An adjustable waist, as well as adjustable ankle cuffs, means you can achieve the perfect fit. TXlite™ Skagway Pants are made from a very stretchy material and have articulated knees that allow a full range of motion.

DESIGNED FOR:

Urban Everyday Life / Outdoor

BREATHABILITY

At high-intensity activity.



WATERPROOF

Withstands heavy rain.



WINDPROOF

Withstands storms.



DURABILITY

Normal- to high-wear resistance.



FEATURES

- Adjustable leg ending
- Adjustable waist
- Articulated knees
- One back pocket
- Reinforcement
- Taped seams
- Two front pockets with zippers
- Zip in leg ending

SHELL FABRIC

- ◇ MPC Extreme™ Shell
- ◇ 3L Stretch
- ◇ WP 20 000 MP 20 000
- ◇ Ripstop
- ◇ PFC-free water-repellent finish
- ◇ 100% Polyamid

FIT

- ◇ Regular

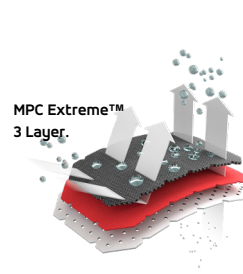
SIZES

- ◇ S-XXXL

ART.NO.

- ◇ 5017445

EURO: 200,00



858 DARK OLIVE

964 DARK BLUE

999 BLACK

A TIMELESS STYLE POWERED WITH MPC EXTREME™

Biscaya Evo Rain Jacket.

Our classic 4-way stretch rain jacket featuring Tenson's proprietary MPC Extreme™. A waterproof and windproof jacket with great breathability to keep you comfortable on your adventure. Biscaya EVO is an essential jacket for any outdoor enthusiast or urban explorer.

This lightweight rain jacket is packed with technical features like adjustable cuffs, adjustable and detachable hood, taped seams, and an inner pocket to keep your valuables safe while out exploring.

DESIGNED FOR:

Urban every day lifestyle / Outdoor

BREATHABILITY

At high-intensity activity.



WATERPROOF

Withstands heavy rain.



WINDPROOF

Withstands storms.



DURABILITY

Normal- to high-wear resistance.



FEATURES

- Adjustable cuffs
- Adjustable hem
- Adjustable hood vertical and horizontal
- Articulated sleeves
- Detachable hood
- Innerpocket
- Taped seams
- Two zippered front pockets
- Ventilation

SHELL FABRIC

- ◇ MPC Extreme™
4-way stretch
WP 15 000
MP 10 000
- ◇ PFC-free
water-repellent finish
- ◇ 100% Lightweight
Polyester

FIT

- ◇ Regular

SIZES

- ◇ S-XXXL

ART.NO.

- ◇ 5017969 - Colour 590 season
- ◇ 5016871 NOOS - Colour 999

EURO: 160,00



590 DARK NAVY

999 BLACK NOOS

Lifestyle / Men

A TIMELESS STYLE POWERED WITH TENSON'S MPC EXTREME™

Biscaya Evo Rain Pants.

Our Tenson Biscaya EVO is our classic 4-way stretch rain pant in MPC Extreme™ that will give you perfect protection on rainy days. Biscaya EVO pants use Tenson's highest grade of MPC™ - Moisture Permeability Coating, MPC Extreme™.

Here at Tenson, we have developed and refined MPC over the last 30 years to meet the demands of ambitious outdoor athletes and urban adventurers, combining extremely effective water-proof properties with an exceptional breathing performance. Our highest grade, MPC Extreme™, achieves at least 10.000 mm.

DESIGNED FOR:

Urban every day lifestyle / Outdoor

BREATHABILITY

At high-intensity activity.



WATERPROOF

Withstands heavy rain.



WINDPROOF

Withstands storms.



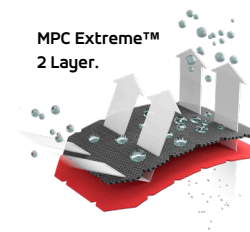
DURABILITY

Normal- to high-wear resistance.



FEATURES

- Adjustable leg ending
- Articulated knees
- Elastic in waist
- Taped seams
- Water-repellent zippers
- Zip-in leg ending



SHELL FABRIC

- ◇ MPC Extreme™
- 4-way stretch
- WP 15 000
- MP 10 000
- ◇ PFC-free
- water-repellent finish

FIT

- ◇ Regular

SIZES

- ◇ XS-XXXL

ART.NO.

- ◇ 5016872

EURO: 110,00

999 BLACK



Tenson Apelviken.

A TIMELESS STYLE

Apelviken PU Rain Coat.

This is a classic stylish PU rain jacket that has adjustable cuffs welded seams, and a fixed adjustable hood. PU, an alternative to fluorocarbon-based rainproofing options, makes garments completely waterproof, durable and more resistant to damage.

DESIGNED FOR:

Urban every day lifestyle / Outdoor

BREATHABILITY

At high-intensity activity.



WATERPROOF

Withstands heavy rain.



WINDPROOF

Withstands storms.



DURABILITY

Normal- to high-wear resistance.



FEATURES

- Adjustable cuffs
- Articulated sleeves
- Fixed hood
- Adjustable hood vertical
- Two front pockets
- Under arm ventilation

FABRIC

- ◇ WP 5 000
- ◇ Tricot backing
- ◇ All seams welded

FIT

- ◇ Regular

SIZES

- ◇ S-XXL

ART.NO.

- ◇ 5017644

EURO: 90,00



964 DARK BLUE



649 OLIVE



999 BLACK

Lifestyle / Men

A woman with blonde hair tied back, wearing a light-colored, long-sleeved raincoat with a high collar and a dark zipper. She is walking through a narrow, stone-walled alleyway. The background shows traditional buildings and a tiled roof. The lighting is warm, suggesting late afternoon or early morning. The text "Lifestyle Women SS24." is overlaid in the center of the image.

Lifestyle Women SS24.

A fashion advertisement featuring a woman in a light grey trench coat and a man in a brown trench coat against a concrete wall. The woman is standing on the left, wearing a light grey cap and a light grey top. The man is in the foreground on the right, out of focus. The background is a textured concrete wall.

Introducing Tenson Trench Nouveau...

...powered with MPC Extreme™



POWERED WITH MPC EXTREME.

Trench Nouveau.

Premiere for a contemporary take on the classic trench coat, Tenson's Trench Nouveau mixes a modern simplistic design combined with a classic silhouette and wind- and waterproof characteristics.

The khaki trench is a timeless piece loved by men & women of all ages, the contemporary Nouveau version mixes classic cuts with the charm of a trench's wider lapel, storm flap and pockets, half belted cuff with buttons etc.

Being such a functional design the trench coat has not witnessed any major changes over the past century, the time has come to change that and offer a new take.

DESIGNED FOR:

Urban every day lifestyle / Outdoor

BREATHABILITY

At high-intensity activity.



WATERPROOF

Withstands storms.



WINDPROOF

Withstands storms.



DURABILITY

Normal- to high-wear resistance.



FEATURES

- Two front pockets
- Ventilation under yoke at back
- Belt in waist
- Slit at sides
- 2 way zip
- Detachable hood
- Adjustable hood vertical
- Adjustable cuffs
- Inner pocket with zip
- Water repellent zipper
- Taped seams



FABRIC

- ◇ MPC Extreme Shell
- ◇ 3L Stretch
- ◇ WP 10 000 mm
- ◇ MP 10 000 gr/m2/24h
- ◇ PFC free waterrepellent finish

SHELL FABRIC

- ◇ 100% Recycle Polyester

FIT

- ◇ Relaxed

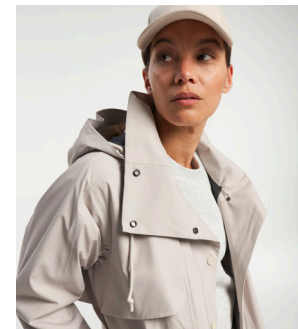
SIZES

- ◇ XS-XL

ART.NO.

- ◇ 5017830

EURO: 350,00



711 SAND

999 BLACK

Lifestyle / Wmn

RECYCLED POLYAMIDE POWERED WITH MPC!

Tenson Transition Collection.

This collection spells stylish comfortable protection from the elements - everyday urban lifestyle pieces that seamlessly transition you from winter to spring and summer to autumn without buying a whole new wardrobe. All rain garments in this collection feature Tenson's proprietary MPC technology.

Tenson Transition Coat.

DESIGNED FOR:

Late Spring / Early Summer
Late Summer / Early Autumn

BREATHABILITY

At high-intensity activity.



WATERPROOF

Withstands heavy rain.



WINDPROOF

Withstands storms.



INSULATION

Withstands low temperatures.



DURABILITY

Normal- to high-wear resistance.



FEATURES

- 2-way main zipper construction
- Adjustable cuffs
- Adjustable fixed hood vertical and horizontal
- High collar
- Inner pocket with zip
- Taped seams
- Two front pockets with zippers
- Water-repellent zippers



RIPSTOP

- ◇ MPC Lightweight
- ◇ WP 5 000 MP 5 000
- ◇ PFC-free water-repellent finish

SHELL FABRIC

- ◇ 100% Recycle Polyamide

LINING

- ◇ 100% Recycle Polyamid

FILLING

- ◇ 80 gr AirPush™ Recycle Polyester insulation

FIT

- ◇ Regular

SIZES

- ◇ XS-XXL

ART.NO.

- ◇ 5018011

EURO: 220,00



485 AUBERGINE



912 LIGHT GREY



733 KHAKI



961 GREY GREEN



999 BLACK

RECYCLED POLYAMIDE POWERED WITH MPC!

Tenson Transition Collection.

This collection spells stylish comfortable protection from the elements - everyday urban lifestyle pieces that seamlessly transition you from winter to spring and summer to autumn without buying a whole new wardrobe. All rain garments in this collection feature Tenson's proprietary MPC technology.

Tenson Transition Jacket.

DESIGNED FOR:

Late Spring / Early Summer
Late Summer / Early Autumn

BREATHABILITY

At high-intensity activity.



WATERPROOF

Withstands heavy rain.



WINDPROOF

Withstands storms.



INSULATION

Withstands low temperatures.



DURABILITY

Normal- to high-wear resistance.



FEATURES

- Adjustable cuffs
- Adjustable hem
- Adjustable hood vertical and horizontal
- Fixed hood
- High collar
- Innerpocket with zip
- Taped seams
- Two front pockets with zippers
- Water repellent zippers



RIPSTOP

- ◇ MPC Lightweight
- ◇ WP 5 000 MP 5 000
- ◇ PFC-free water-repellent finish

SHELL FABRIC

- ◇ 100% Recycle Polyamid

LINING

- ◇ 100% Recycle Polyamid

FILLING

- ◇ 80 gr AirPush™ Recycle Polyester insulation

FIT

- ◇ Regular

SIZES

- ◇ XS-XXL

ART.NO.

- ◇ 5018013

EURO: 200,00



485 AUBERGINE



912 LIGHT GREY



961 GREY GREEN



999 BLACK

NEW! PADDED RAIN! POWERED WITH MPC!

Tenson Transition Collection.

This collection spells stylish comfortable protection from the elements - everyday urban lifestyle pieces that seamlessly transition you from winter to spring and summer to autumn without buying a whole new wardrobe. All rain garments in this collection feature Tenson's proprietary MPC technology.

Tenson Transition Vest.

DESIGNED FOR:

Late Spring / Early Summer
Late Summer / Early Autumn

BREATHABILITY

At high-intensity activity.



WATERPROOF

Withstands heavy rain.



WINDPROOF

Withstands storms.



INSULATION

Withstands low temperatures.



DURABILITY

Normal- to high-wear resistance.



FEATURES

- 2 way zip
- Adjustable hood vertical and horizontal
- Adjustable waist
- Fixed hood
- High collar
- Innerpocket with zip
- Taped seams
- Two front pockets with zippers
- Water repellent zippers



RIPSTOP

- ◇ MPC Lightweight
- ◇ WP 5 000 MP 5 000
- ◇ PFC-free water-repellent finish

SHELL FABRIC

- ◇ 100% Recycle Polyamid

LINING

- ◇ 100% Recycle Polyamid

FILLING

- ◇ 80 gr AirPush™ Recycle Polyester insulation

FIT

- ◇ Regular

SIZES

- ◇ XS-XL

ART.NO.

- ◇ 5018015

EURO: 150,00



961 GREY GREEN



485 AUBERGINE



999 BLACK

POWERED WITH RDS CERTIFIED DOWN.

TXlite™ ShiBui Down Jacket.

A lightweight and packable RDS down (90/10 down/feather 650 fill power) jacket that is wind and water repellent make sit great for any outdoor activity all year around. The Shibui down jacket can be worn as an outer layer or under a shell jacket for extra warmth - it fits our popular Shibui ski shell jacket launched AW23 season like a glove! The RDS certified down is responsibly sourced down, fully traceable. Comes with a PFC free water-repellent finish.

Shibui - a Japanese word that refers to a particular aesthetic of simple, subtle, and unobtrusive beauty. It describes an object that appears to be simple overall, but includes subtle details such as textures and functionality. It reflects a balance between simplicity and complexity.

DESIGNED FOR:

Urban Everyday Life / Outdoor

BREATHABILITY

At high-intensity activity.



INSULATION

Withstands low temperatures.



WINDPROOF

Withstands storms.



DURABILITY

Normal- to high-wear resistance.



FEATURES

- Adjustable hem
- Articulated sleeves
- Elastic binding at sleeve ends
- Fill Power 650
- Fixed hood
- Folded chinguard
- Glued channels
- Insulation: Duckdown 90/10
- RDS certified down
- Two front pockets with zippers

SHELL FABRIC

- ◇ Light Weight
- ◇ PFC- Free water repellent finish
- ◇ 100% Recycle Polyamide

LINING

- ◇ 100% Polyamide
- INSULATION**
- ◇ RDS Certified Down
 - 90% Down
 - 10% Feather
 - ◇ 650 Fill Power

FIT

- ◇ Regular

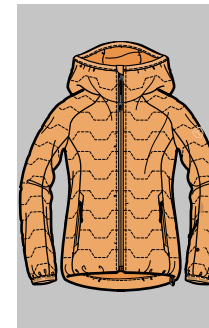
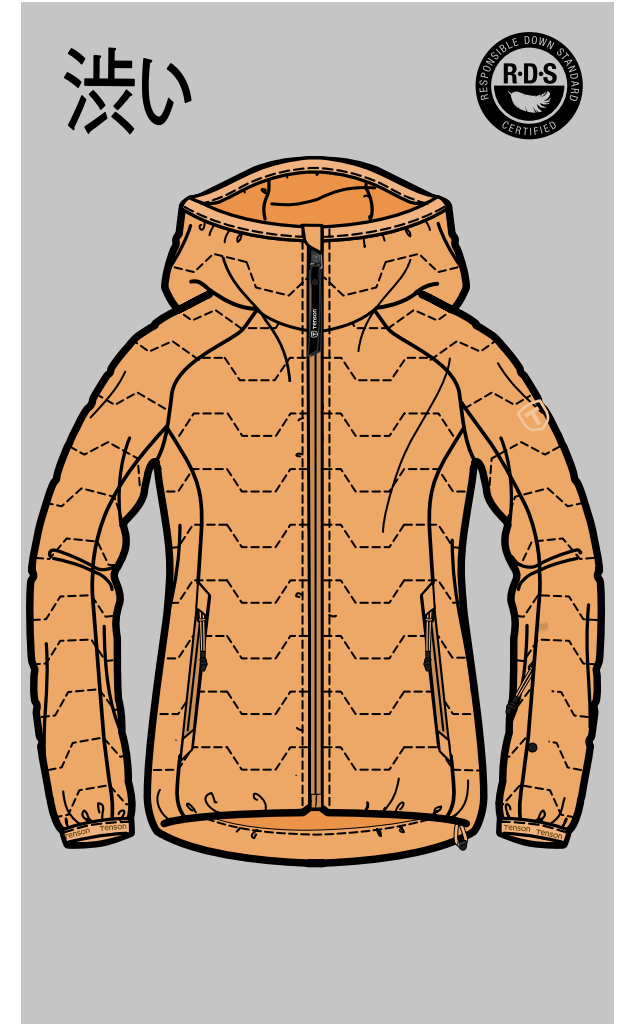
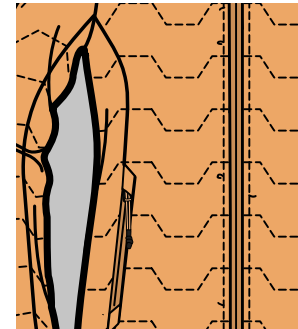
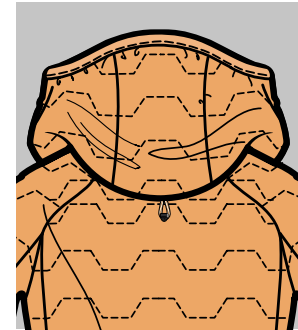
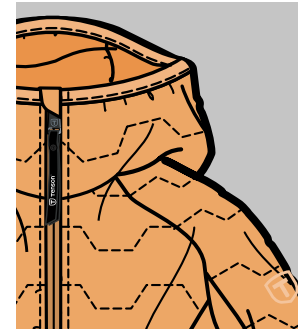
SIZES

- ◇ XS-XS

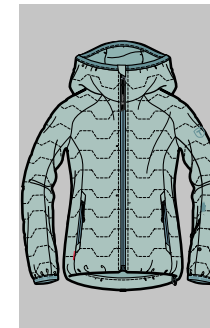
ART.NO.

- ◇ 5017960

EURO: 180,00



215 APRICOT



644 GREY GREEN



964 DARK BLUE



999 BLACK

A woman with long blonde hair, wearing a dark green Mountain Anorak 55 jacket, stands on stone steps in a historic town. She is smiling and looking towards a man in a light-colored jacket who is seen from the back. The background features stone buildings, a street lamp, and hanging flower baskets.

Mountain Anorak 55. Reconnecting with our history.

A TRIBUTE TO THE 1955 TENSON MOUNTAIN ANORAK

Mountain Anorak 55.

In 1955 Tenson launches the Fjäll Anoraken (Mountain Anorak 7031), which soon takes part in the Norwegian expedition of 1971 to the summit of Huagoruncho, a 5,800+ meter peak in the Chilean Andes. The Tenson Fjäll Anoraken was made with a cotton poplin fabric, a durable, coated mix of cotton and polyester for wind- and water-proof properties along with very good breathability in variable conditions.

The version you will soon wear is a tribute to the Mountain Anorak of 1955. Of course, we have taken the liberty to improve the functionality and enhanced the durability of the fabric which is a comfortable cotton and polyester blend.

DESIGNED FOR:

Trekking / Hiking / Lifestyle

BREATHABILITY

At high-intensity activity.



WATERPROOF

Withstands heavy rain.



WINDPROOF

Withstands storms.



DURABILITY

Normal- to high-wear resistance.



FEATURES

- Adjustable cuffs
- Adjustable hem
- Fixed adjustable vertical and horizontal hood
- Adjustable waist
- Kangaroo pocket at front
- Two zippered front pockets
- Ventilation

FABRIC

- ◇ EkoTrek™
- 65% Recycle Polyester
- 35% Organic Cotton



FIT

- ◇ Relaxed unisex

SIZES

- ◇ XXS-XXL / Unisex

ART.NO.

- ◇ 5017688

EURO: 200,00



233 DARK ORANGE



680 OLIVE



712 SAND



590 DARK NAVY

A woman with blonde hair tied back is wearing a light blue Misty Shell Jacket. She is leaning against a rough, textured stone wall. The background is a blurred outdoor setting with buildings and a person in the distance. The text "Misty Shell Jacket." is overlaid on the left side of the image.

Misty Shell Jacket.

POWERED WITH TENSON'S MPC EXTREME™

Misty Shell Jacket.

Misty shell jacket is a women's waterproof jacket (MPC Extreme) that works as an outer shell. It has a 10K waterproof rating (WP 10.000 / MP 10.000) and its stretchy material allows great freedom of movement. Both hood and sleeves can be adjusted to get the ideal fit. The seams are sealed and its zips are water resistant. It has good ventilation and is a useful jacket in both summer and winter.

Wear it as a light and stylish rain jacket in the summer and wear it over warm clothes in the colder months. A waterproof shell jacket is an essential item on a hike with friends but can also be worn to work on rainy days.

DESIGNED FOR:

Rainy & windy days. Lifestyle.

BREATHABILITY

At high-intensity activity.



WATERPROOF

Withstands heavy rain.



WINDPROOF

Withstands storms.



DURABILITY

Normal- to high-wear resistance.



FEATURES

- Adjustable cuffs
- Adjustable hem
- Adjustable hood vertical and horizontal
- Articulated sleeves
- Fixed hood
- Taped seams
- Two front pockets with zippers
- Water repellent zippers
- Ventilation

RIPSTOP

- ◇ MPC Extreme™ Shell 2.5L Stretch
- ◇ WP 10 000 MP 10 000
- ◇ PFC-free water-repellent finish

SHELL FABRIC

- ◇ 50% Recycle Polyester
- ◇ 50% Polyester

FIT

- ◇ Regular

SIZES

- ◇ XS-XL

ART.NO.

- ◇ 5017633

EURO: 200,00



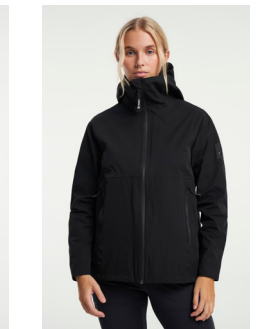
711 SAND



961 GREY GREEN



964 DARK BLUE



999 BLACK

POWERED WITH TENSON'S MPC EXTREME™

Misty Parka.

Our Misty Parka is the perfect jacket for rainy outings as Tenson's proprietary and highest grade laminate, MPC Extreme™, will protect you from the elements with a 10.000mm waterproof rating, water repellent zips, and sealed seams. MPC Extreme™ also has great breathability to prevent moisture building up inside. With its stylish design and practical features, this jacket can be worn both in town and in the great outdoors.

DESIGNED FOR:

Rainy & windy days. Lifestyle.

BREATHABILITY

At high-intensity activity.



WATERPROOF

Withstands heavy rain.



WINDPROOF

Withstands storms.



DURABILITY

Normal- to high-wear resistance.



FEATURES

- 2-way main zipper construction
- Adjustable cuffs
- Fixed adjustable vertical hood
- Fleece inside neck at back
- High collar
- Inner pocket with zip
- Taped seams
- Slit at sides with zippers
- Two front pockets with zippers
- Water-repellent zippers
- Ventilation under yoke at back

RIPSTOP

- ◇ MPC Extreme™ Shell 2.5L Stretch
- ◇ WP 10 000 MP 10 000
- ◇ PFC-free water-repellent finish

SHELL FABRIC

- ◇ 50% Recycle Polyester
- ◇ 50% Polyester

FIT

- ◇ Relaxed

SIZES

- ◇ XS-XL

ART.NO.

- ◇ 5017779

EURO: 220,00



711 SAND



961 GREY GREEN



964 DARK BLUE



999 BLACK

Lifestyle / Wmn

A woman with blonde hair tied back, wearing a light-colored, long parka, is walking through a narrow alleyway. The walls are made of rough, textured stone. In the foreground, there are large green plants. The scene is lit with warm, golden light, suggesting late afternoon or early morning. The text "Tenson Maxi Parka. Powered with MPC Extreme™" is overlaid in white on the image.

Tenson Maxi Parka. Powered with MPC Extreme™

POWERED WITH TENSON'S MPC EXTREME™

Maxi Parka.

Our Maxi Parka is the perfect long jacket for rainy outings as Tenson's proprietary and highest grade laminate, MPC Extreme™, will protect you from the elements with a 10.000mm waterproof rating, water repellent zips, and sealed seams. MPC Extreme™ also has great breathability to prevent moisture building up inside. With its stylish design and practical features, this parka can be worn both in town and in the great outdoors.

DESIGNED FOR:

Rainy & windy days. Lifestyle.

BREATHABILITY

At high-intensity activity.



WATERPROOF

Withstands heavy rain.



WINDPROOF

Withstands storms.



DURABILITY

Normal- to high-wear resistance.



FEATURES

- 2-way main zipper construction
- Adjustable cuffs
- Fixed adjustable vertical hood
- Fleece inside neck at back
- High collar
- Inner pocket with zip
- Taped seams
- Two front pockets with zippers
- Water-repellent zippers
- Ventilation under yoke at back

RIPSTOP

- ◇ MPC Extreme™ Shell 2.5L Stretch
- ◇ WP 10 000 MP 10 000
- ◇ PFC-free water-repellent finish

SHELL FABRIC

- ◇ 50% Recycle Polyester
- ◇ 50% Polyester

FIT

- ◇ Regular

SIZES

- ◇ XS-XL

ART.NO.

- ◇ 5017635

EURO: 250,00



725 LIGHT BEIGE

680 OLIVE

999 BLACK

A TIMELESS STYLE POWERED WITH MPC EXTREME™

Biscaya Evo Rain Jacket.

Our classic 4-way stretch rain jacket featuring Tenson's proprietary MPC Extreme™. A waterproof and windproof jacket with great breathability to keep you comfortable on your adventure. Biscaya EVO is an essential jacket for any outdoor enthusiast or urban explorer.

This lightweight rain jacket is packed with technical features like adjustable cuffs, adjustable and detachable hood, taped seams, and an inner pocket to keep your valuables safe while out exploring.

DESIGNED FOR:

Urban every day lifestyle / Outdoor

BREATHABILITY

At high-intensity activity.



WATERPROOF

Withstands heavy rain.



WINDPROOF

Withstands storms.



DURABILITY

Normal- to high-wear resistance.



FEATURES

- Adjustable cuffs
- Adjustable hem
- Articulated sleeves
- Detachable hood
- Taped seams
- Ventilation

SHELL FABRIC

- ◇ MPC Extreme™
- 4-way stretch
- WP 15 000
- MP 10 000
- ◇ PFC-free
- water-repellent finish
- ◇ 100 % Polyester

FIT

- ◇ Regular

SIZES

- ◇ XS-XXL

ART.NO.

- ◇ 5017968 - Colour 590
- ◇ 5016869 NOOS - Colour 999

EURO: 160,00



590 NAVY BLUE



999 BLACK NOOS

POWERED WITH TENSON'S MPC EXTREME™

Malou Jacket.

Malou is a perfect everyday jacket that is waterproof and windproof, powered with Tenson's MPC Plus. Wear it commuting or out on a walk. Being fully waterproof Malou has taped seams and a PFC-free water repellent finish.

DESIGNED FOR:

Rainy & windy days. Lifestyle.

BREATHABILITY

At high-intensity activity.



WATERPROOF

Withstands heavy rain.



WINDPROOF

Withstands storms.



DURABILITY

Normal- to high-wear resistance.



FEATURES

- Adjustable cuffs
- Adjustable hem
- Adjustable hood vertical
- Articulated sleeves
- Fixed hood
- Taped seams
- Two front pockets with zippers

FABRIC

- ◇ MPC Plus
- ◇ WP8000, MP8000
- ◇ PFC free waterrepellent finish

SHELL FABRIC

- ◇ 100% Polyester

LINING

- ◇ 100% Polyester

FIT

- ◇ Relaxed

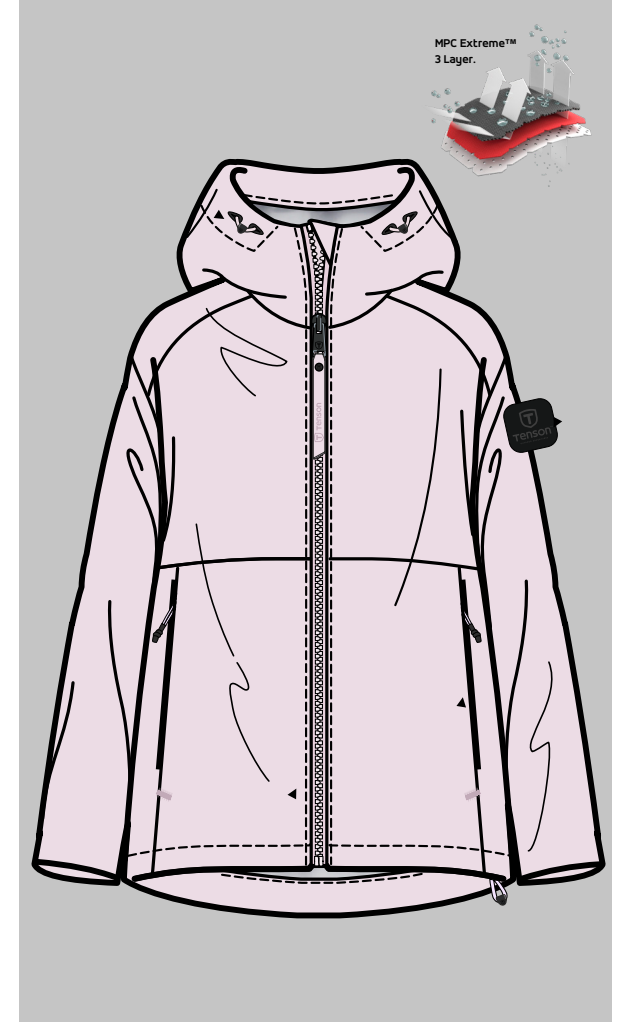
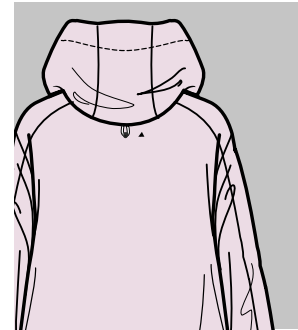
SIZES

- ◇ XS-XL

ART.NO.

- ◇ 5018004

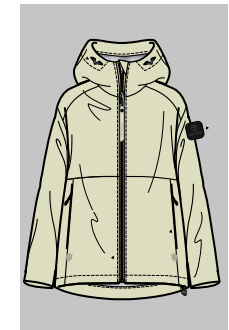
EURO: 160,00



307 LIGHT PINK



641 GREY GREEN



725 LIGHT BEIGE

POWERED WITH TENSON'S MPC EXTREME™

Malou Parka.

Malou is a perfect everyday parka with a fish tail design that is waterproof and wind-proof, powered with Tenson's MPC Plus. Wear it commuting or out on a walk. Being fully waterproof Malou has taped seams and a PFC-free water repellent finish.

DESIGNED FOR:

Rainy & windy days. Lifestyle.

BREATHABILITY

At high-intensity activity.



WATERPROOF

Withstands heavy rain.



WINDPROOF

Withstands storms.



DURABILITY

Normal- to high-wear resistance.



FEATURES

- Adjustable cuffs
- Adjustable hood vertical - Adjustable waist
- Articulated sleeves
- Fixed hood
- Taped seams
- Two front pockets
- Two way zip at front

FABRIC

- ◇ MPC Plus
- ◇ WP8000, MP8000
- ◇ PFC free waterrepellent finish

SHELL FABRIC

- ◇ 100% Polyester

LINING

- ◇ 100% Polyester

FIT

- ◇ Relaxed

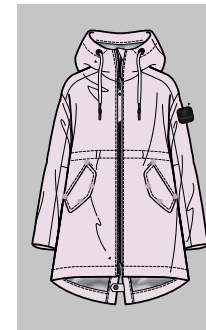
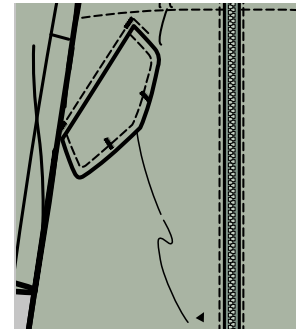
SIZES

- ◇ XS-XL

ART.NO.

- ◇ 5018005

EURO: 180,00



307 LIGHT PINK



660 LIGHT GREEN



999 BLACK

SUPER COSY & WARM

Yoke Half Zip.

Our Yoke Half Zip is a warm, cosy and stylish fleece. Fleece is a variant of 100% polyester which is very warm and currently on trend. It can be worn both as a jacket and as an insulating midlayer on colder days. Its raised collar provides good insulation at the neck.

DESIGNED FOR:

Urban every day lifestyle / Outdoor

BREATHABILITY

At high-intensity activity.



DURABILITY

Normal- to high-wear resistance.



FEATURES

- Elastic at wrist
- Elastic hem
- Half zip at neck opening
- Two front pockets with zippers



FABRIC

- ◇ Pile

SHELL FABRIC

- ◇ 100% Recycled Polyester

FIT

- ◇ Relaxed

SIZES

- ◇ XS-XL

ART.NO.

- ◇ 5017645

EURO: 80,00



641 GREY GREEN



711 SAND



999 BLACK

SUPER COSY & WARM

Yoke Full Zip.

Our Yoke Full Zip is a warm, cosy and stylish fleece. Fleece is a variant of 100% polyester which is very warm and currently on trend. It can be worn both as a jacket and as an insulating midlayer on colder days. Its raised collar provides good insulation at the neck.

DESIGNED FOR:

Urban every day lifestyle / Outdoor

BREATHABILITY

At high-intensity activity.



DURABILITY

Normal- to high-wear resistance.



FEATURES

- Elastic at wrist
- Elastic hem
- Two front pockets with zippers

FABRIC

- ◇ Pile

SHELL FABRIC

- ◇ 100% Recycled Polyester

FIT

- ◇ Relaxed

SIZES

- ◇ S-XXL

ART.NO.

- ◇ 5017895

EURO: 90,00



641 GREY GREEN



711 SAND



999 BLACK

100% RECYCLED POLYESTER

Miracle Fleece.

Miracle Fleece is a fleece sweater with zip that is made from 100% polyester. It has elastic bindings at the sleeve ends and adjustable hem for the perfect fit. The fleece sweater has two front pockets with zips and a Tenson logo on the chest.

Miracle Fleece is perfect as a mid-layer and just as comfortable to use as a soft sweater. It has a high collar to keep your neck warm and there's a full-length zip if you want to let out some heat. Miracle Fleece is the perfect sweater to bring on your ski trip whether you prefer downhill or cross-country.

DESIGNED FOR:

Urban every day lifestyle / Outdoor

BREATHABILITY

At high-intensity activity.



WINDPROOF

Withstands storms.



DURABILITY

Normal- to high-wear resistance.



FEATURES

- Elastic at wrist
- Elastic hem
- High collar
- One chest pocket with zipper
- Two front pockets with zippers

FABRIC

- ◇ Fleece
- ◇ Antipilling
- ◇ Soft warm insulation

SHELL FABRIC

- ◇ 100% Polyester

FIT

- ◇ Relaxed

SIZES

- ◇ XS-XXL

ART.NO.

- ◇ 5017394 - Colour 644 & 711
- ◇ 5017651 NOOS - Colour 590, 933, 999



644 BLUE GREY

711 SAND

590 DARK NAVY

933 LIGHT GREY

999 BLACK

EURO: 70,00



Rain Women SS24.

TXlite™ Skagway Jacket.
Powered with MPC Extreme™



POWERED WITH TENSON'S MPC EXTREME™

TXlite™ Skagway Jacket.

Our TXlite™ Skagway is a stylish shell jacket made with Tenon's MPC Extreme™ material, which makes this jacket completely waterproof with exceptional breathability. It is specially developed to be very lightweight and packable for your adventurous journeys.

If blazing sun suddenly turns into windy weather you can have your TXlite™ to hand in your bag. TXlite™ Skagway also features an adjustable hood, hem and cuffs, as well as articulated arms, under-arms ventilation, taped seams and multiple zip pockets.

DESIGNED FOR:

Urban Everyday Life / Outdoor

BREATHABILITY

At high-intensity activity.



WATERPROOF

Withstands heavy rain.



WINDPROOF

Withstands storms.



DURABILITY

Normal- to high-wear resistance.



FEATURES

- Adjustable cuffs
- Adjustable hem
- Adjustable hood
- vertical and horizontal
- Articulated sleeves
- Fixed hood
- Folded chinguard
- Innerpocket with zip
- One sleeve pocket with zipper
- RECCO® Rescue system
- Taped seams
- Two chest pockets with zippers
- Two front pockets with zippers
- Water repellent zippers
- Ventilation under arm



SHELL FABRIC

- ◇ MPC Extreme™ Shell
- ◇ 3L Stretch
- ◇ WP 20 000 MP 10 000
- ◇ Ripstop
- ◇ PFC-free water-repellent finish
- ◇ 100% Polyamide

FIT

- ◇ Regular

SIZES

- ◇ XS-XL

ART.NO.

- ◇ 5017442

EURO: 300,00



644 BLUE GREY



409 PURPLE



964 DARK BLUE



999 BLACK

POWERED WITH TENSON'S MPC EXTREME™

TXlite™ Skagway Pant.

A pair of waterproof pants for men made from Tenson's MPC Extreme™ laminate technology, with a 20.000mm waterproof rating. Perfect for active outdoor adventures where the conditions call for durable and protective clothing. In the cold, these shell trousers can be worn on top of a base layer, over another pair of trousers, or as one of many layers. An adjustable waist, as well as adjustable ankle cuffs, means you can achieve the perfect fit. TXlite™ Skagway Pants are made from a very stretchy material and have articulated knees that allow a full range of motion.

DESIGNED FOR:

Urban Everyday Life / Outdoor

BREATHABILITY

At high-intensity activity.



WATERPROOF

Withstands heavy rain.



WINDPROOF

Withstands storms.



DURABILITY

Normal- to high-wear resistance.



FEATURES

- Adjustable leg ending
- Adjustable waist
- Articulated knees
- One back pocket
- Reinforcement
- Taped seams
- Two front pockets with zippers
- Zip-in leg ending

SHELL FABRIC

- ◇ MPC Extreme™ Shell
- ◇ 3L Stretch
- ◇ WP 20 000 MP 10 000
- ◇ Ripstop
- ◇ PFC-free water-repellent finish
- ◇ 100% Polyamide

FIT

- ◇ Regular

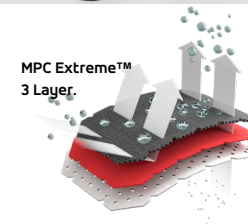
SIZES

- ◇ XS-XL

ART.NO.

- ◇ 5017444

EURO: 200,00



999 BLACK

A TIMELESS STYLE POWERED WITH MPC EXTREME™

Biscaya Evo Rain Jacket.

Our classic 4-way stretch rain jacket featuring Tenson's proprietary MPC Extreme™. A waterproof and windproof jacket with great breathability to keep you comfortable on your adventure. Biscaya EVO is an essential jacket for any outdoor enthusiast or urban explorer.

This lightweight rain jacket is packed with technical features like adjustable cuffs, adjustable and detachable hood, taped seams, and an inner pocket to keep your valuables safe while out exploring.

DESIGNED FOR:

Urban every day lifestyle / Outdoor

BREATHABILITY

At high-intensity activity.



WATERPROOF

Withstands heavy rain.



WINDPROOF

Withstands storms.



DURABILITY

Normal- to high-wear resistance.



FEATURES

- Adjustable cuffs
- Adjustable hem
- Articulated sleeves
- Detachable hood
- Taped seams
- Ventilation

SHELL FABRIC

- ◇ MPC Extreme™
- 4-way stretch
- WP 15 000
- MP 10 000
- ◇ PFC-free
- water-repellent finish
- ◇ 100 % Polyester

FIT

- ◇ Regular

SIZES

- ◇ XS-XXL

ART.NO.

- ◇ 5017968 - Colour 590
- ◇ 5016869 NOOS - Colour 999

EURO: 160,00



590 NAVY BLUE



999 BLACK NOOS

A TIMELESS STYLE POWERED WITH TENSON'S MPC EXTREME™

Biscaya Evo Rain Pants.

Our Tenson Biscaya EVO is our classic 4-way stretch rain pant in MPC Extreme™ that will give you perfect protection on rainy days. Biscaya EVO pants use Tenson's highest grade of MPC™ - Moisture Permeability Coating, MPC Extreme™.

Here at Tenson, we have developed and refined MPC over the last 30 years to meet the demands of ambitious outdoor athletes and urban adventurers, combining extremely effective water-proof properties with an exceptional breathing performance. Our highest grade, MPC Extreme™, achieves at least 10.000 mm.

DESIGNED FOR:

Urban every day lifestyle / Outdoor

BREATHABILITY

At high-intensity activity.



WATERPROOF

Withstands heavy rain.



WINDPROOF

Withstands storms.



DURABILITY

Normal- to high-wear resistance.



FEATURES

- Adjustable leg ending
- Articulated knees
- Elastic in waist
- Taped seams
- Water-repellent zippers
- Zip-in leg ending

SHELL FABRIC

- ◇ MPC Extreme™
- 4-way stretch
- WP 15 000
- MP 10 000
- ◇ PFC-free
- water-repellent finish
- ◇ 100 % Polyester

FIT

- ◇ Regular

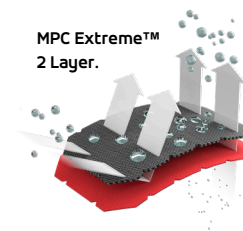
SIZES

- ◇ XS-XXL

ART.NO.

- ◇ 5016870

EURO: 110,00



999 BLACK

Tenson Apelviken.



A TIMELESS STYLE

Apelviken PU Rain Coat.

This is a classic stylish PU rain jacket that has adjustable cuffs welded seams, and a fixed adjustable hood. PU, an alternative to fluorocarbon-based rainproofing options, makes garments completely waterproof, durable and more resistant to damage.

DESIGNED FOR:

Urban every day lifestyle / Outdoor

BREATHABILITY

At high-intensity activity.



WATERPROOF

Withstands heavy rain.



WINDPROOF

Withstands storms.



DURABILITY

Normal- to high-wear resistance.



FEATURES

- Adjustable cuffs and hood
- Articulated sleeves
- Fixed hood

FABRIC

- ◇ WP 5 000
- ◇ Tricot backing
- all seams welded

FIT

- ◇ Relaxed

SIZES

- ◇ XS-XL

ART.NO.

- ◇ 5017643

EURO: 90,00



409 LIGHT PURPLE



649 OLIVE



712 SAND



485 AUBERGINE



999 BLACK

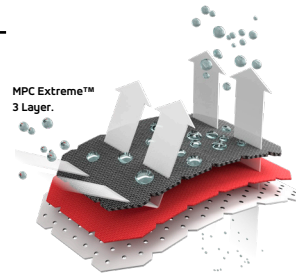
Lifestyle / Wmn

TENSON TECHNOLOGIES.

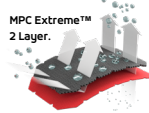
We've got your back!

MPC Extreme™ - our highest grade - combines extremely effective waterproof properties with exceptional breathing performance. Guaranteed waterproofness of at least 10.000mm.

MPC Extreme™
3 Layer.

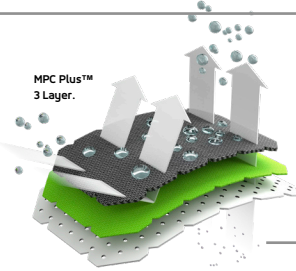


MPC Extreme™
2 Layer.



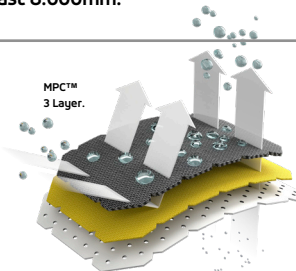
MPC Plus™ combines very effective waterproof properties with effective breathability properties suitable for everyday, active outdoors lifestyles. Guaranteed waterproofness of at least 8.000mm.

MPC Plus™
3 Layer.

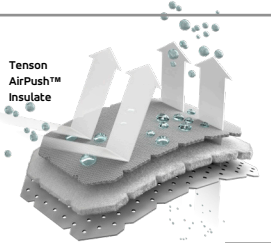


MPC™ combines effective waterproof properties with a good breathing performance, making Tenson garments featuring MPC™ suitable for everyday active lifestyles. Guaranteed waterproofness of at least 5.000mm.

MPC™
3 Layer.



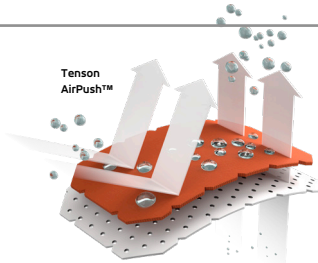
Tenson
AirPush™
Insulate



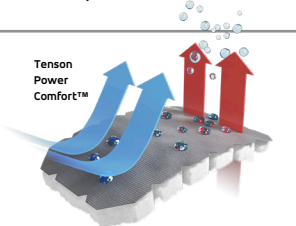
Tenson's AirPush™ Insulate offers lightweight, voluminous insulation for cold-weather conditions. The featherless padding is designed to provide excellent breathability, moisture transport and movement making it ideal for the super-active outdoor adventure traveler.

Tenson AirPush™ is a lightweight microfibre technology focused on improving breathability, suitable for strenuous activities which require maximum comfort and breathability along with wind and water resistance. Made possible by the high density of the fabric (+30% higher than conventional fabrics).

Tenson
AirPush™



Tenson
Power
Comfort™



Tenson's Power Comfort™ Insulate offers lightweight, voluminous insulation for cold-weather conditions. The featherless padding is designed to provide excellent breathability, moisture transport and movement.

TENSON TECHNOLOGIES.

Waterproof. Windproof. Breathable. = MPC™.

We've got your back in terms of function and laminate! We've been on a quest to withstand wind and water since the early 1980s when we at Tenson launched our self-developed MPC (Moisture Permeability Coating) laminate that keeps you dry and comfortable.

Tenson's MPC technology: developed to withstand wind and water since the early 1980's keeping you dry and comfortable no matter what weather mother nature might throw at you.

The MPC laminate causes the rainwater to drain off the garment. At the same time, the condensation / moisture that comes from the body is transported into and through the garment. In other words, MPC allows the garment to "breathe" so it feels comfortable to wear even during demanding activity. Our MPC garments also are taped at seams to add additional wind- and waterproof protection.

Tenson MPC features three performance grades - MPC Extreme™, MPC Plus and MPC:



Technologies





Tenson®

EST. 1951